

NO COMPROMISE

**VUHTI**  
RESPONSIBLE FOR SPEED

**SEASON 23-24**

# OVER A HUNDRED YEARS OF INNOVATION - NO COMPROMISES



## FOREWORDS

The long history of ski waxes began with the use of natural materials such as tar. Since then, and over the course of hundreds of years, enhancing ski performance has been a key focus point. The Vauhti brand first came into existence in the 1910s with its revolutionary ski wax "Salaisuus" (Secret). This product was a true innovation and unmatched in terms of performance and glide. The groundwork started by Salaisuus and Vauhti's founders paved the way for the Vauhti ski wax company to become and remain a pioneer in the industry.

All of Vauhti's products, and the technology behind them, undergo rigorous and long-term testing in both laboratory and field conditions. The product development team is driven by a passion to achieve complete knowledge and understanding of that thin layer between ski and snow. The purpose is to reach optimal ski performance in all possible weather conditions. Vauhti has made several important innovations over the years, the most recent being the raw materials used in Vauhti's fluorocarbon-free PURE collection. The company has several patents and collaborates with the world's top skiers.

With over 100 years of experience and continuous innovation in ski wax technology, Vauhti strives to give passionate skiers the best performance, in every circumstance.

## RESPONSIBILITY BASED ON TECHNOLOGY

Waxing should be so straightforward that it can be done straight from one's living room. No need for a separate waxing space. With Vauhti, every forest, mountain, and fell becomes accessible. Everyone can enjoy cross-country or alpine skiing in all environments and regardless of weather conditions. Vauhti's liquid products are easy to use and developed with the same accuracy as the wax combinations used by the world's best skiers.

Respect for people and nature is the foundation of Vauhti's operations. No one can ignore climate change and environmental concerns any longer. By promoting sustainability and developing environmentally friendly products, we can provide our future generations with the equal opportunity to enjoy skiing in the years to come. As a responsible company, one of our main priorities is to guarantee the sustainability of our operations. We are dedicated to the performance of our technology and products. The success of our personnel, partners, and customers is one of our main priorities.

Vauhti products are manufactured for snow sports and therefore, it's our responsibility to consider our environmental and economic footprint. The new Vauhti 360° collection will move the ski wax industry in an environmentally friendly direction where raw materials and packaging materials are sourced from natural resources.

**VAUHTI**

OUR HISTORY	4-5
OUR FACTORY AND R&D	6-7
OUR ENVIRONMENTAL RESPONSIBILITY	8-9
OUR PARTNERS	10-11
OUR PRODUCT LINES	12-13

**CARE**

63

CARE SKIN SKI	64
CARE CLEAN & GLIDE   CROWN & ZERO	65
CARE GRIP REMOVER   BASE CLEANER	66
CARE KIT	67-69

**PURE**

14-15

PURE RACE LIQUID GLIDE OLD SNOW	16
PURE RACE LIQUID GLIDE NEW SNOW	17
PURE RACE POWDER OLD SNOW	18
PURE RACE GLIDE WAX   POWDER NEW SNOW	19
PURE RACE KLISTER	20
PURE RACE GRIP WAX	21
PURE PRO LIQUID GLIDE   GLIDE WAX	23
PURE UP LIQUID GLIDE	25
PURE UP GLIDE WAX	26
PURE ONE LIQUID GLIDE	28
PURE ONE GLIDE WAX	29-30
PURE SKI TOURING LIQUID GLIDE   CLEANING PRODUCT	32
PURE SKI TOURING TOOL   KIT	33

**TOOLS**

70

TOOLS SCRAPER	71
TOOLS CORK	72
TOOLS CLOTH   FIBER   TEFLON   WAX IRON	73
TOOLS ROTO BRUSH   ROTO HANDLE	74
TOOLS SKI VISE	75
TOOLS FILE GUIDE   FILE CLAMP	76
TOOLS SHARP	77
TOOLS SIDE WALL PLANNER	78
TOOLS BRUSH	79
TOOLS BRUSH   ALPINE BRUSH	80
TOOLS ALPINE PRODUCT   DIAMOND FILE	81
TOOLS ICECUT FILE	82-83
TOOLS BAG	84-87
TOOLS SALES DISPLAY	88-95

**PACE**

34-35

PACE RC SPEED LIQUID GLIDE	36
PACE FC SPEED BLOCK   FC SPEED POWDER	37
PACE UF LIQUID GLIDE   GLIDE WAX	39
PACE HF LIQUID GLIDE   GLIDE WAX	41
PACE HF GLIDE WAX	42
PACE LF LIQUID GLIDE	44
PACE LF GLIDE WAX	45
PACE LF GLIDE WAX   PACE ALPINE BASE	46
PACE GW LIQUID GLIDE	48
PACE GW GLIDE WAX	49
PACE SW SERVICE WAX	51
PACE GF GRIP WAX	53
PACE GS GRIP WAX	54
PACE GS BASE WAX   PACE GT TAR GRIP WAX	55
PACE KF KLISTER	56
PACE KS KLISTER	57

**360°**

58

360° LIQUID GLIDE	59
360° GLIDE WAX	60
360° CLEANING & MAINTENANCE	61
360° TOOL   KIT   DISPLAY	62

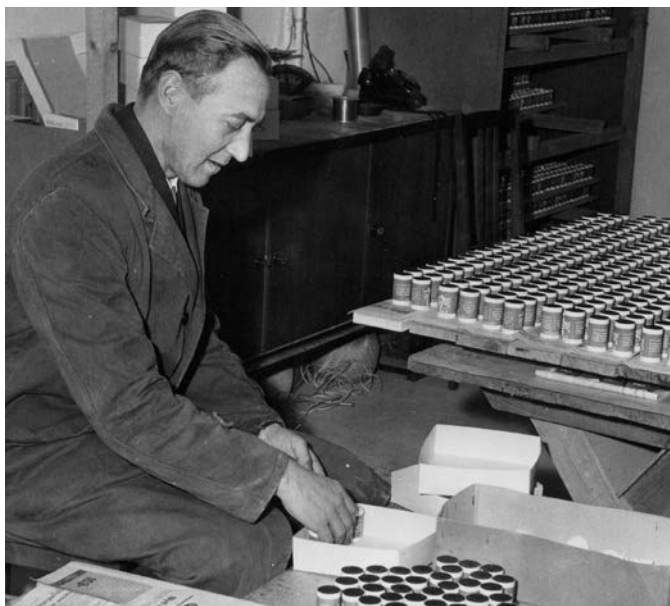


# VAUHTI - BREAKING TECHNOLOGICAL GROUND SINCE 1912

In the 1910s, Finland's Eetu Niska was one of the most successful elite skiers. He started experimenting with ski wax development and manufacturing over the course of his racing career and after retirement, opened a ski wax factory in Kattilainen. His ski wax SALAISUUS ("SECRET") was unbeatable in terms of reputation and performance and in wet conditions, it would almost feel like flying. The Tolsa brothers, Valto and Aulis, were regular visitors at Eetu Niska's factory. They were keen to learn about wax making and mixing and got to see first-hand how the era's most popular wax "SALAISUUS" was made.

Eetu Niska let them in on his waxing secrets and under his mentorship, Aulis Tolsa also became a wax master specializing in exceptional weather conditions. In 1934, Valto Tolsa started the "Valto Tolsa Suksirasvatehdas Oy" ski wax enterprise which ran up until the outbreak of the Second World War. Production stopped and operations never resumed, even after the end of the war. In 1951, his brother Aulis started his own namesake ski wax factory and brought into existence the Vauhti ski wax range.

## 1912-1950



The Vauhti wax range and operations continued growing between 1951 and 1991. In the 1960s, Vauhti waxes were sold all over the Nordic Countries, and ski wax production grew to 300,000 units per year.

## 1951-1991



Vauhti developed products in partnership with the best skiers. One of the many top athletes supporting Vauhti was Olympic and World Championship medalist Aki Karvonen. As the years went by and Aulis Tolsa grew older, he offered Aki the opportunity to take over the Vauhti business. The deal closed in 1991 and together with Toivo Turunen, Aki Karvonen founded the company "Vauhti Speed".

Under Aki Karvonen, large-scale and successful product development began in cooperation with the Finnish state research institute VTT. Vauhti became a significant player in the world of ski racing, with turnover increasing fivefold over the next ten years. Thanks to the Swedish and Russian markets, exports made up almost half of Vauhti's total sales and the company expanded operations into roller skis, ski poles, and gloves.

Vauhti became a pioneer in liquid ski wax development. In 2002, the company launched the world's first liquid grip wax which set the tone for Vauhti's future business plans.

## 1992-2013





In 2014, the company was taken over by a Finnish family enterprise already established in sporting goods industry wholesales. Vauhti's entire product range and concept were reinvented, and the objective was set to become a world leader in wax technology. The primary focus was the development of liquid waxes and care products, building off Aki Karvonen's previous ideas and innovations. The company invested heavily in production technology and facilities. With the adoption of an automatic bottling line and robotics, the Vauhti factory became the world's most modern ski wax production facility.

The highly respected Esa Puukilainen, Ph.D., was recruited to join the Vauhti Team in the position of Product Development Director. As part of his thesis, Esa Puukilainen's research focused on the interaction between plastics and water with an application to ski bases. Consequently, he has a unique understanding of chemistry and skiing technology combined with his personal practical experience and a passion for ski racing.

Over the next few years, Vauhti's liquid waxes gained a significant position of the market and Vauhti became one of the leading and most innovative wax company. The company's long-term commitment to the development of e.g. fluorine-free waxes resulted in the launch of the new PURE range in 2019. In 2021, Vauhti also developed the 360° ski wax collection composed of products based solely on natural ingredients, including packaging materials and other supplies.

## 2014-2021



## 2022- ►►►



On November 30th 2021, a dramatic fire broke out and destroyed all of Vauhti's facilities, including the factory which had only been built a few years prior. In the wake of the disaster, plans for a new and improved factory quickly arose, taking into account all the lessons learned from the previous production line.

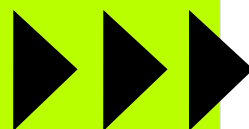
This new factory, located in the Tikkala industrial park in Tohmajärvi, was completed in the fall of 2022 alongside a product development center, modern storage facilities, and office premises. These new facilities employ all the latest technological innovations guaranteeing efficient, adaptive, and automated ski wax production lines. Sustainability and ecological concerns played a big part in the design and construction of these facilities. The objective was to make Vauhti's new production site one of the leading techno-chemistry plants in terms of energy efficiency and safety.

Vauhti's responsible and innovative journey continues!

# GROUNDBREAKING TECHNOLOGY IN A STATE-OF-THE-ART PRODUCTION SITE

Vauhti's strategic objective is to become one of the leading ski wax technology companies. This demands a lot from both the personnel and the technical infrastructure.

Vauhti's solid foundations are built on the company's long history and immense practical experience. CTO Esa Puukilainen has a deep theoretical understanding of materials, technology, and chemistry. Only a profound knowledge of such things can make it possible to continuously innovate. All Vauhti's personnel are skilled and motivated, with a drive to continuously learn and develop.






Construction of a new factory was recently completed, in the Tikkala industrial park located in Tohmäjärvi. Particular attention was paid to energy efficiency and safety during the design and construction of this new production site and all of the latest technological innovations have been installed. The objective is to guarantee efficient, adaptive, and automated production lines for ski waxes and other techno-chemical products. Modern production systems also ensure the high quality of products and safe manufacturing processes.

Waxes are made using an automated procedure, with each product having its own optimized production parameters. Automated systems monitor the manufacturing processes and casting temperatures of each product at a precision of one-tenth of a unit. The casting itself is managed by an automatic production robot. Liquid products are made in four fully closed digitally controlled production reactors, from which they are taken to an adaptive bottling line to be bottled in their dedicated product bottles.



# ENVIRONMENTAL RESPONSIBILITY AT VAUHTI



The premise of Vauhti's operations is respect for people and nature. No one can ignore climate change or environmental concerns any longer. Our goal is to promote sustainability by developing environmentally friendly products. We are a company focused on winter sports and we want to give future generations an equal opportunity to enjoy these activities.

Vauhti's products are designed to make the skiing experience even more enjoyable. Our company, therefore, plays an important role in promoting people's well-being through skiing. In cooperation with the Finnish specialist organization Lassila & Tikanoja Oy, we developed an environmental and social responsibility program in conformity with ISO 14001 standards. We aim to become fully compliant with these standards in 2023 through a systematic management system and procedural policy.



We strive to demonstrate social and environmental responsibility throughout our organization with the following initiatives:

**1.**

Vauhti employs concrete measures to reach carbon neutrality. The company compensates for the carbon dioxide released by the ski waxes and their manufacturing, traveling, and electricity use.

**2.**

Vauhti's modern production facility optimizes energy efficiency and reduces production-related environmental impacts and safety concerns.

**3.**

Vauhti contracts out logistical operations primarily to partners in line with the company's environmental objectives.

**4.**

Vauhti procurement criteria are made as per the company's environmental initiatives.

**5.**

Vauhti manufactures durable and high-quality products.

**6.**

Vauhti includes recycled materials in its product packaging.

**7.**

Vauhti's products are made in compliance with the requirements of the ECHA (European Chemicals Agency) and only use fluorine raw materials that have been approved by ECHA.

**8.**

All ski wax and care products are made in socially and ethically acceptable conditions at Vauhti's factory in Tohmajärvi.

**9.**

Vauhti manufactures and actively develops fluorine-free and environmentally friendly products and actively works to increase the sales volume of these products.

**10.**

All Vauhti product bottles come with ISO-certified child safety caps.

**11.**

Vauhti does not use aerosol-pressurized bottles.

**12.**

Vauhti uses a dropper and sponge in their product bottles, minimizing environmentally hazardous emissions.

**13.**

Vauhti's liquid paraffin waxes last for three times as long as traditional paraffin waxes, thus reducing the company's environmental impact.

**14.**

Vauhti sorts and recycles all waste generated during its operations following national and local directives







# PROUD PARTNERS OF VAUHTI

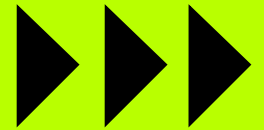


**SVENSKA SKIDFÖRBUNDET®**  
SWEDISH SKI ASSOCIATION





# OUR PRODUCT LINES



# ***PACE***

**SYNTHETIC  
SERIES**

# ***PURE***

**FLUOROCARBON FREE  
SERIES**



**PLANT BASED  
SERIES**

# ***CARE***

**MAINTENANCE  
SERIES**

# ***TOOLS***

**TOOLS AND ACCESSORIES  
SERIES**





***PURE***

# ***PURE***

## **FLUOROCARBON FREE SERIES**



**RACE**

**PRO**

**UP**

**ONE**

**SKI TOURING**



***PURE***

# ***PURE*** **RACE**



Val  
Gardena

PURE RACE OLD SNOW LIQUID GLIDE 80ml

PURE RACE OLD SNOW liquid glide waxes are processed in two steps. First powder form raw materials are homogenized and then processed in organic solvents to give high performance liquids in racing skiing.

High-quality hydrocarbon ingredients, zinc stearate and silicon wax gives excellence performance and good durability to the products in all weather conditions. Especially for old and artificial snow.

RACE

FOR XC AND  
ALPINE



32110-RACEOSW80  
**RACE WARM** (OLD SNOW)  
+7/-3°C | 45/27°F



32110-RACEOSC80  
**RACE COLD** (OLD SNOW)  
-2/-20°C | 28/-4°F



32110-RACEOSLDR80  
**RACE LDR** (OLD SNOW)  
+5/-10°C | 41/14°F



PURE RACE NEW SNOW LIQUID GLIDE 80ml

PURE RACE NEW SNOW glide waxes are intended specifically for competitive skiers and demanding active skiers for racing. High-quality hydrocarbon ingredients, zinc stearate and silicon wax gives excellence performance and good durability to the products in all weather conditions. Especially for natural snow.

RACE

FOR XC AND  
ALPINE



32110-RACENSW80  
**RACE WARM** (NEW SNOW)  
+7/-3°C | 45/27°F



32110-RACENSC80  
**RACE COLD** (NEW SNOW)  
-2/-20°C | 28/-4°F



32110-RACENSLDR80  
**RACE LDR** (NEW SNOW)  
+5/-10°C | 41/14°F

PURE RACE POWDER OLD SNOW 35g

PURE RACE OLD SNOW glide waxes are processed with powder form raw materials and used as high performance coating powder. High-quality hydrocarbon ingredients, zinc stearate and silicon wax gives excellence performance and good durability to the products in all weather conditions. Especially for old and artificial snow.

RACE

FOR XC AND ALPINE



31110-RACEOSW35  
**RACE WARM** (OLD SNOW)  
+7/-3°C | 45/27°F



31110-RACEOSC35  
**RACE COLD** (OLD SNOW)  
-2/-20°C | 28/-4°F



31110-RACEOSLDR35  
**RACE LDR** (OLD SNOW)  
+5/-10°C | 41/14°F



31110-RACEOSB35  
**RACE BLACK** (OLD SNOW)

NO COMPROMISE

PURE RACE GLIDE WAX NEW SNOW 45g | PURE RACE POWDER NEW SNOW 35g

PURE RACE NEW SNOW glide waxes are intended specifically for competitive skiers and demanding active skiers for racing. High-quality hydrocarbon ingredients, zinc stearate and silicon wax gives excellence performance and good durability to the products in all weather conditions. Especially for natural snow.

RACE

FOR XC AND ALPINE



31110-RACENSW45  
**RACE WARM** (NEW SNOW)  
+7/-3°C | 45/27°F



31110-RACENSC45  
**RACE COLD** (NEW SNOW)  
-2/-20°C | 28/-4°F



31110-RACENSLDR45  
**RACE LDR** (NEW SNOW)  
+5/-10°C | 41/14°F



31110-RACENSP45  
**RACE POLAR** (NEW SNOW)  
-5/-25°C | 23/-13°F



31110-RACENSB45  
**RACE BLACK** (NEW SNOW)

WILL TO WIN

PURE RACE KLISTER

PURE RACE klister are especially for old, artificial and coarse snow.

RACE  
FOR XC



385-KPRR  
**RACE RED**  
+10/+11°C | 50/34°F



385-KPRLDR  
**RACE LDR**  
+5/-10°C | 41/14°F



385-KPRV  
**RACE VIOLET**  
+2/-6°C | 36/21°F



385-KPRB  
**RACE BLUE**  
-1/-15°C | 30/5°F





PURE RACE GRIP WAX 45g

PURE RACE OLD SNOW grip waxes are especially for old, artificial and coarse snow. Viscous waxes are very durable and thanks to new additive also fast.

PURE RACE NEW SNOW grip waxes are especially for new, natural and fine snow. Thanks to the new additives glide properties are much better than with the traditional synthetic grip waxes.



**RACE**  
**FOR XC**



377-GPROSR  
**RACE RED** (OLD SNOW)  
+3/-1°C | 37/30°F



377-GPROSLDR  
**RACE LDR** (OLD SNOW)  
0/-10°C | 32/14°F



377-GPROSB  
**RACE BLUE** (OLD SNOW)  
-5/-20°C | 41/-4°F



377-GPRNSW  
**RACE WHITE** (NEW SNOW)  
+3/-3°C | 37/27°F



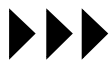
377-GPRNSP  
**RACE PINK** (NEW SNOW)  
-1/-5°C | 30/23°F



377-GPRNSV  
**RACE VIOLET** (NEW SNOW)  
-2/-7°C | 28/19°F



377-GPRNSG  
**RACE GREEN** (NEW SNOW)  
-5/-20°C | 23/-4°F



***PURE***

# ***PURE*** **PRO**



PURE PRO LIQUID GLIDE 80ml | 200ml

PURE PRO glide waxes are intended specifically for demanding active skiers and competitive skiers for training rounds. High quality hydrocarbon ingredients, zinc stearate and silicon wax gives excellence performance and good durability to the products in all snow types and weather conditions.

PRO  
FOR XC AND ALPINE



32120-PROW80  
**PRO WARM**  
+7/-3°C | 45/27°F



32120-PROC80  
**PRO COLD**  
-2/-20°C | 28/-4°F



32120-PROLDR80  
**PRO LDR**  
+5/-10°C | 41/14°F



32120-PROB80  
**PRO BASE WAX**



32120-PROB200  
**PRO BASE WAX**

PURE PRO GLIDE WAX 45g

PURE PRO glide waxes are intended specifically for demanding active skiers and competitive skiers for training rounds. High quality hydrocarbon ingredients, zinc stearate and silicon wax gives excellence performance and good durability to the products in all snow types and weather conditions.

PRO  
FOR XC AND ALPINE



31127-PROW45  
**PRO WARM**  
+7/-3°C | 45/27°F



31127-PROC45  
**PRO COLD**  
-2/-20°C | 28/-4°F



31127-PROLDR45  
**PRO LDR**  
+5/-10°C | 41/14°F





***PURE***





PURE UP LIQUID GLIDE 100ml

PURE UP liquid glide waxes are intended specifically for active skiers and competitive skiers for training rounds. High-quality hydrocarbon ingredients, zinc stearate and silicon wax gives excellence performance and good durability to the products in all snow types and weather conditions.

UP

FOR XC AND ALPINE



32130-UPW100  
**UP WARM**  
+7/-3°C | 45/27°F



32130-UPC100  
**UP COLD**  
-2/-15°C | 28/5°F



32130-UPLDR100  
**UP LDR**  
+5/-10°C | 41/14°F



32130-UPP100  
**UP POLAR**  
-5/-25°C | 23/-13°F

PURE UP LIQUID GLIDE 200ml

Bigger 200ml version of Pure Up liquid glide.

UP

FOR XC AND ALPINE



32130-UPW200  
**UP WARM**  
+7/-3°C | 45/27°F



32130-UPC200  
**UP COLD**  
-2/-15°C | 28/5°F



32130-UPLDR200  
**UP LDR**  
+5/-10°C | 41/14°F



32130-UPP200  
**UP POLAR**  
-5/-25°C | 23/-13°F

UP GLIDE WAX 45g

PURE UP glide waxes are intended specifically for active skiers and competitive skiers for training rounds. High-quality hydrocarbon ingredients, zinc stearate and silicon wax gives excellence performance and good durability to the products in all snow types and weather conditions.

**UP**

**FOR XC AND ALPINE**



31130-UPW45  
**UP WARM**  
+7/-3°C | 45/27°F



31130-UPC45  
**UP COLD**  
-2/-15°C | 28/5°F



31130-UPP45  
**UP POLAR**  
-5/-25°C | 23/-13°F



31130-UPLDR45  
**UP LDR**  
+5/-10°C | 41/14°F



31130-UPWC45  
**UP MIX (WARM & COLD)**  
WARM: +7/-3°C | 45/27°F  
COLD: +2/-15°C | 28/5°F

UP GLIDE WAX 180g

Bigger 180g version of UP glide wax.

**UP**

**FOR XC AND ALPINE**



31131-UPW180  
**UP WARM**  
+7/-3°C | 45/27°F



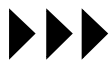
31131-UPC180  
**UP COLD**  
-2/-15°C | 28/5°F



31131-UPP180  
**UP POLAR**  
-5/-25°C | 23/-13°F



31131-UPLDR180  
**UP LDR**  
+5/-10°C | 41/14°F



***PURE***

# *PURE* **ONE**



PURE ONE LIQUID GLIDE 100ml

PURE ONE liquid glide waxes are based on high-quality hydrocarbon ingredients. Waxes are intended for recreational and active skiers in all snow type as well as for base preparation and maintenance for racing.

**ONE**  
**FOR XC AND ALPINE**



32140-ONEW100  
**ONE WARM**  
+7/-3°C | 45/27°F



32140-ONEC100  
**ONE COLD**  
-2/-15°C | 28/5°F



32140-ONEP100  
**ONE POLAR**  
-5/-25°C | 23/-13°F



32140-ONELD100  
**ONE LD**  
+5/-10°C | 41/14°F



32140-ONEB100  
**ONE BASE WAX**

PURE ONE LIQUID GLIDE 200ml

Bigger 200ml version of Pure ONE liquid glide wax

**ONE**  
**FOR XC AND ALPINE**



32140-ONEW200  
**ONE WARM**  
+7/-3°C | 45/27°F



32140-ONEC200  
**ONE COLD**  
-2/-15°C | 28/5°F



32140-ONEP200  
**ONE POLAR**  
-5/-25°C | 23/-13°F



32140-ONELD200  
**ONE LD**  
+5/-10°C | 41/14°F



32140-ONEB200  
**ONE BASE WAX**



PURE ONE GLIDE WAX 60g

PURE ONE glide waxes are based on high-quality hydrocarbon ingredients. Waxes are intended for recreational and active skiers in all snow type as well as for base preparation and maintenance for racing.

ONE  
FOR XC AND  
ALPINE



31140-ONEW60  
**ONE WARM**  
+7/-3°C | 45/27°F



31140-ONEC60  
**ONE COLD**  
-2/-15°C | 28/5°F



31140-ONEP60  
**ONE POLAR**  
-5/-25°C | 23/-13°F



31140-ONELD60  
**ONE LD**  
+5/-10°C | 41/14°F



31140-ONEG60  
**ONE GRAPHITE**  
-1/-25°C | 30/-13°F

PURE ONE GLIDE WAX 180g

Bigger 180g version of Pure ONE glide wax.

ONE  
FOR XC AND  
ALPINE



31141-ONEW180  
**ONE WARM**  
+7/-3°C | 45/27°F



31141-ONEC180  
**ONE COLD**  
-2/-15°C | 28/5°F



31141-ONEP180  
**ONE POLAR**  
-5/-25°C | 23/-13°F



31141-ONELD180  
**ONE LD**  
+5/-10°C | 41/14°F



31141-ONEG180  
**ONE GRAPHITE**  
-1/-25°C | 30/-13°F

ONE GLIDE WAX 540g

Biggest 540g version of Pure ONE glide wax.

ONE  
FOR XC AND  
ALPINE



31142-ONEW540  
**ONE WARM**  
+7/-3°C | 45/27°F



31142-ONEC540  
**ONE COLD**  
-2/-15°C | 28/5°F



31142-ONEP540  
**ONE POLAR**  
-5/-25°C | 23/-13°F



31142-ONELD540  
**ONE LD**  
+5/-10°C | 41/14°F



31142-ONEG540  
**ONE GRAPHITE**  
-1/-25°C | 30/-13°F





***PURE***

# ***PURE***

## **SKI TOURING**





SKI TOURING LIQUID GLIDE WAX 100ml			<b>SKI TOURING</b>
	STARLG100 <b>ALLROUND GLIDE WAX</b>	STCG100 <b>CLEAN &amp; GLIDE</b>	Liquid products to clean and glide wax the touring skis.

SKI TOURING SKIN SKI & CLEANING PRODUCTS 100ml	Liquid products to clean and maintain the skin strip of touring skis.		<b>SKI TOURING</b>
	STSSCARE100 <b>SKIN CARE</b>	STSSCC100 <b>SKIN SKI CLEAN &amp; CARE</b>	STSSC100 <b>SKIN CLEANER</b>



SKI TOURING TOOL

SKI TOURING



110-00980  
POLISHING CLOTH 10M



115-01020  
NYLON BRUSH LARGE

SKI TOURING KIT

SKI TOURING



ST KIT  
SKI TOURING KIT

Ski touring kit contains all to clean, maintain and glide wax touring skis.



***PACE***

# ***PACE***

## **SYNTHETIC SERIES**



**SPEED**

**UF**

**HF**

**LF**

**GW**

**SW**

**GF | GS | GT**

**KF | KS**



***PACE***

# ***PACE*** **SPEED**



RC SPEED LIQUID GLIDE 80ml

RC SPEED liquid waxes are based on ingredients from the highest level of chemical research used in UF series combined with top coatings.

All these together give the products high speed racing performance, high hydrophobicity, superb durability. Ski performance can be further improved by coating RC SPEEDS with suitable top coating.

**SPEED**

**FOR XC AND  
ALPINE**



341-PLRCSWA80  
**RC SPEED WARM**  
+7/-3°C | 45/27 °F



341-PLRCS80  
**RC SPEED COLD**  
-2/-20°C | 28/-4 °F



341-PLRCSLDR80  
**RC SPEED LDR**  
+5/-10°C | 41/14 °F



FC SPEED POWDERS 30g | FC SPEED BLOCK 20g

FC SPEED products have superb characteristics. They minimize the surface energy of the ski base, making it super-hydrophobic and dirt-repelling. At the same time, they are excellent in cold conditions to reduce dry friction. The speed, glide sensitivity, and durability of these glide waxes are excellent in all weather conditions. With versatile application methods every skier will benefit, even the lightweight skiers. FC SPEED products are made in purified raw materials to comply with ECHA regulations on fluorocarbon substances, PFOA < 25 ppb.

SPEED  
FOR XC AND ALPINE



320-FCSPW  
FC SPEED WET  
+10/-1°C | 50/30 °F



320-FCSPM  
FC SPEED MID  
0/-6°C | 32/21 °F



320-FCSPC  
FC SPEED COLD  
-6/-20°C | 21/-4 °F



3320-FCSPLDR  
FC SPEED LDR  
+5/-10°C | 41/14 °F



315-FCSBW  
FC SPEED WET  
+10/-1°C | 50/30 °F



315-FCSBM  
FC SPEED MID  
0/-6°C | 32/21 °F



315-FCSBC  
FC SPEED COLD  
-6/-20°C | 21/-4 °F



315-FCSBLDR  
FC SPEED LDR  
+5/-10°C | 41/14 °F

NO COMPROMISE



***PACE***





UF LIQUID GLIDE 80ml	<p>Pace UF liquid glide wax is intended specifically for competitive skiers and demanding active skiers. High-quality hydrocarbon ingredients,hard paraffins, and carefully selected additives gives excellence performance, good durability, and dirt resistance to the products in all weather conditions. Especially for old and artificial snow.</p>		<b>UF</b> <b>FOR XC AND ALPINE</b>
	341-PLUFWA80 <b>UF WARM</b> +7/-3°C   45/27 °F	341-PLUFC80 <b>UF COLD</b> -2/-20°C   28/-4 °F	341-PLUFLDR80 <b>UF LDR</b> +5/-10°C   41/14 °F

UF GLIDE WAX 45g	<p>Pace UF glide wax is intended specifically for competitive skiers and demanding active skiers. High-quality hydrocarbon ingredients,hard paraffins, and carefully selected additives gives excellence performance, good durability, and dirt resistance to the products in all weather conditions. Especially for old and artificial snow.</p>			<b>UF</b> <b>FOR XC AND ALPINE</b>
	330-PUFWA45 <b>UF WARM</b> +7/-3°C   45/27 °F	330-PUFC45 <b>UF COLD</b> -2/-20°C   28/-4 °F	330-PUFLDR45 <b>UF LDR</b> +5/-10°C   41/14 °F	330-PUFB45 <b>UF BLACK</b>



***PACE***





HF LIQUID GLIDE 80ml	Pace HF liquid glide wax is intended specifically for competitive skiers and demanding active skiers. Especially for natural and fine-grained snow.		<b>HF</b> FOR XC AND ALPINE
			
	341-PLHFWA80 <b>HF WARM</b> +7/-3°C   45/27 °F	341-PLHFC80 <b>HF COLD</b> -2/-20°C   28/-4 °F	341-PLHFLDR80 <b>HF LDR</b> +5/-10°C   41/14 °F

HF GLIDE WAX 45g	Pace HF glide wax is intended specifically for competitive skiers and demanding active skiers. Especially for natural and fine-grained snow.			<b>HF</b> FOR XC AND ALPINE
				
	332-PHFWA45 <b>HF WARM</b> +7/-3°C   45/27 °F	332-PHFC45 <b>HF COLD</b> -2/-20°C   28/-4 °F	332-PHFLDR45 <b>HF LDR</b> +5/-10°C   41/14 °F	332-PHFB45 <b>HF BLACK</b>



HF GLIDE WAX 90g	Bigger 90g version of Pace HF glide wax.			<b>HF</b> FOR XC AND ALPINE
	333-PHFWA90 <b>HF WARM</b> +7/-3°C   45/27 °F	333-PHFC90 <b>HF COLD</b> -2/-20°C   28/-4 °F	333-PHFLDR90 <b>HF LDR</b> +5/-10°C   41/14 °F	

HF GLIDE WAX 180g	Biggest 180g version of Pace HF glide wax.			<b>HF</b> FOR XC AND ALPINE
	334-PHFWA180 <b>HF WARM</b> +7/-3°C   45/27 °F	334-PHFC180 <b>HF COLD</b> -2/-20°C   28/-4 °F	334-PHFLDR180 <b>HF LDR</b> +5/-10°C   41/14 °F	



***PACE***







LF LIQUID GLIDE 80ml

Pace LF liquid glide waxes are intended specifically for active recreational skiers and competitive skiers for training rounds.

Fluorinated glider series with good gliding performance in all snow types and weather conditions.

**LF**  
**FOR XC AND ALPINE**



341-PLLFWA80  
**LF WARM**  
+7/-3°C | 45/27 °F

341-PLLFC80  
**LF COLD**  
-2/-15°C | 28/5 °F



341-PLLFP80  
**LF POLAR**  
-5/-25°C | 23/-13 °F

341-PLLFAT80  
**LF ALL TEMP**

341-PLLFBA80  
**LF BASE WAX**



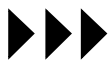
LF GLIDE WAX 60g	Pace LF glide waxes are intended specifically for active recreational skiers and competitive skiers for training rounds. Fluorinated glider series with good gliding performance in all snow types and weather conditions.				LF FOR XC AND ALPINE
					
	343-PLFRWA60 LF WARM +7/-3°C   45/27 °F	343-PLFRC60 LF COLD -2/-15°C   28/5 °F	343-PLFRP60 LF POLAR -5/-25°C   23/-13 °F	343-PLFRAT60 LF ALL TEMP	343-PLFRG60 LF ALL GRAPHITE -1/-25°C   30/-13 °F

LF GLIDE WAX 180g	Bigger 180g version of Pace LF glide wax.				LF FOR XC AND ALPINE
					
	345-PLFRWA180 LF WARM +7/-3°C   45/27 °F	345-PLFRC180 LF COLD -2/-15°C   28/5 °F	345-PLFRP180 LF POLAR -5/-25°C   23/-13 °F	345-PLFRAT180 LF ALL TEMP	345-PLFRG180 LF ALL GRAPHITE -1/-25°C   30/-13 °F



LF GLIDE WAX 540g	Biggest 540g version of Pace LF glide wax.				<div>LF</div> <div>FOR XC AND ALPINE</div>
	346-PLFRWA540 LF WARM +7/-3°C   45/27 °F	346-PLFRC540 LF COLD -2/-15°C   28/5 °F	346-PLFRP540 LF POLAR -5/-25°C   23/-13 °F	346-PLFRAT540 LF ALL TEMP	346-PLFRG540 LF ALL GRAPHITE -1/-25°C   30/-13 °F

ALPINE BASE 200ML		<h1>ALPINE BASE</h1>
		<p>Highly greasy wax absorbs very well into the ski base. For base preparation of new, stoneground, or 'overhauled' alpine skis. Forms a good primer surface for harder waxes in 1-2 treatments and by that prevents overheating of the ski base during high speed rides.</p>
		<p>PABA200 ALPINE BASE</p>



# ***PACE*** **GW**



GW LIQUID GLIDE 80ml

Fluorocarbon free Pace GW waxes are intended for recreational and active skiers in all snow type as well as for base preparation and maintenance for racing. Easy and enjoyable waxing. GW liquids have thinner content than other liquid glide waxes which means faster evaporation time and easier to brush.

**GW**  
**FOR XC AND ALPINE**



13041-GWWA80  
**GW WARM**  
+7/-3°C | 45/27°F



13041-GWC80  
**GW COLD**  
-2/-20°C | 28/-4°F





13041-GWP80  
**GW POLAR**  
-5/-25°C | 23/-13°F



13041-GWAT80  
**GW ALL TEMP**



GW GLIDE WAX 60g	Fluorocarbon free Pace GW glide waxes are intended for recreational and active skiers in all snow type as well as for base preparation and maintenance for racing.			<b>GW</b> FOR XC AND ALPINE
				
	325-GWWA60 <b>GW WARM</b> +7/-3°C   45/27°F	325-GWC60 <b>GW COLD</b> -2/-15°C   28/5°F	325-GWP60 <b>GW POLAR</b> -5/-25°C   23/-13°F	

GW GLIDE WAX 180g	Bigger 180g version of Pace GW glide wax			<b>GW</b> FOR XC AND ALPINE
				
	325-GWWA180 <b>GW WARM</b> +7/-3°C   45/27°F	325-GWC180 <b>GW COLD</b> -2/-15°C   28/5°F	325-GWP180 <b>GW POLAR</b> -5/-25°C   23/-13°F	



***PACE***

***PACE***

**SW**



SW SERVICE WAX 900g

Pace SW glide waxes to maintain base material of all skis and snowboards packed in 900 g carton box (5 x 180 g).

**SW**  
FOR XC AND ALPINE



324-SWWA900  
**SW WARM**  
+7/-3°C | 45/27 °F



324-SWC900  
**SW COLD**  
-2/-15°C | 28/5 °F



324-SWP900  
**SW POLAR**  
-5/-25°C | 23/-13 °F



324-SWG900  
**SW GRAPHITE**  
-7/-25°C | 19/-13 °F



324-SWB900  
**SW BASE**



324-SWA900  
**SW ALPINE**



***PACE***

***PACE***

**GF | GS | GT**





FLUORINATED GRIP WAX 45g

Excellent performance of GF-Line fluorinated grip waxes comes from a revolutionary ingredient that reacts to temperature precisely. Thanks to this innovation, the risk of the grip wax icing in sub-zero temperatures is reduced considerably and the grip properties are exceptional. GF-Line grip waxes have wide operation range, which makes them a good choice also for recreational skiers.

**GF**  
**FOR XC**



347-GFR  
**GF RED**  
+2/-1°C | 36/30°F

347-GFS  
**GF SILVER**  
+1/-4°C | 34/25°F

347-GFP  
**GF PINK** (NEW SNOW)  
0/-5°C | 32/23°F






347-GFV  
**GF VIOLET**  
-1/-7°C | 30/19°F



347-GFC  
**GF CARROT** (OLD SNOW)  
-2/-12°C | 28/10°F

347-GFB  
**GF BLUE**  
-3/-10°C | 27/14°F

347-GFG  
**GF GREEN**  
-4/-20°C | 25/-4°F

GS SYNTHETIC GRIP WAX 45 g	GS grip wax series for all snow types, but especially for old and artificial snow. These waxes are durable and easy to apply, suitable for race or recreational use.			GS FOR XC	
					
	357-GSR GS RED +1/-2°C   34/28°F	357-GSC GS CARROT -1/-6°C   30/21°F	357-GSB GS BLUE -5/-15°C   23/5°F	357-GSG GS RED -10/-30°C   14/-22°F	

GS LIQUID GRIP WAX 80ml	Liquid grip waxes are suitable for all snow types and they can be applied on ski base easily without any tools. You get thin and even layer easily with sponge and the waxes are very durable. Apply and let it dry perfectly.			GS FOR XC	
					
	341-LGSBAS GS BASE SUPER	341-LGSV GS VIOLET -1/-7°C   30/19 °F	341-LGSC GS CARROT -2/-20°C   28/-4 °F		

GS BASE WAX 45 g	GS base waxes have excellent binding properties to secure durability of overlaying grip waxes.		<div>GS</div> <div>FOR XC</div>	
				
	357-GSBA GS BASE AT	357-GSBAS GS BASE SUPER		




GT TAR GRIP WAX 45 g	GT grip wax series especially for for natural and fine-grained snow. Tar waxes have a wide operating range and more convenient waxing properties, suitable for race or recreational use.			<div>GT</div> <div>FOR XC</div>	
					
	367-GTR GT RED +1/-1°C   34/30°F	367-GTP GT PINK 0/-4°C   32/25°F	367-GTC GT CARROT -1/-6°C   30/21°F		367-GTG GT GREEN -6/-20°C   21/-4°F



KF FLUORINATED KLISTER 60 g	Fluorinated klister series for wet, icy and coarse snow conditions.					<b>KF</b> FOR XC
						
	382-KFBA <b>KF BASE</b> +10/-20°C   50/-4°F	382-KFR <b>KF RED</b> +10/+2°C   50/36°F	382-KFV <b>KF VIOLET</b> +3/-8°C   37/18°F	382-KFB <b>KF BLUE</b> +1/-15°C   34/5°F		
						382-KFU <b>KF UNIVERSAL</b> +10/-7°C   50/19°F



KS KLISTERS 60 g	Synthetic klister series for wet, icy and coarse snow conditions.				<b>KS</b> FOR XC
					
	375-KSBA <b>KS BASE</b>	375-KSR <b>KS RED</b> +10/+2°C   50/36°F	375-KSV <b>KS VIOLET</b> +1/-10°C   34/14°F	375-KSB <b>KS BLUE</b> +0/-15°C   32/5°F	375-KSU <b>KS UNIVERSAL</b> +4/-7°C   39/19°F

KS LIQUID KLISTER 80ml	Liquid klister series are suitable for wet, icy and coarse snow conditions and they can be applied on ski base easily without any tools. You get thin and even layer easily with sponge and the waxes are very durable. Apply and let it dry perfectly.		<b>KS</b> FOR XC
			
	341-LKSBA <b>KS BASE</b>	341-LKSU <b>KS UNIVERSAL</b>	



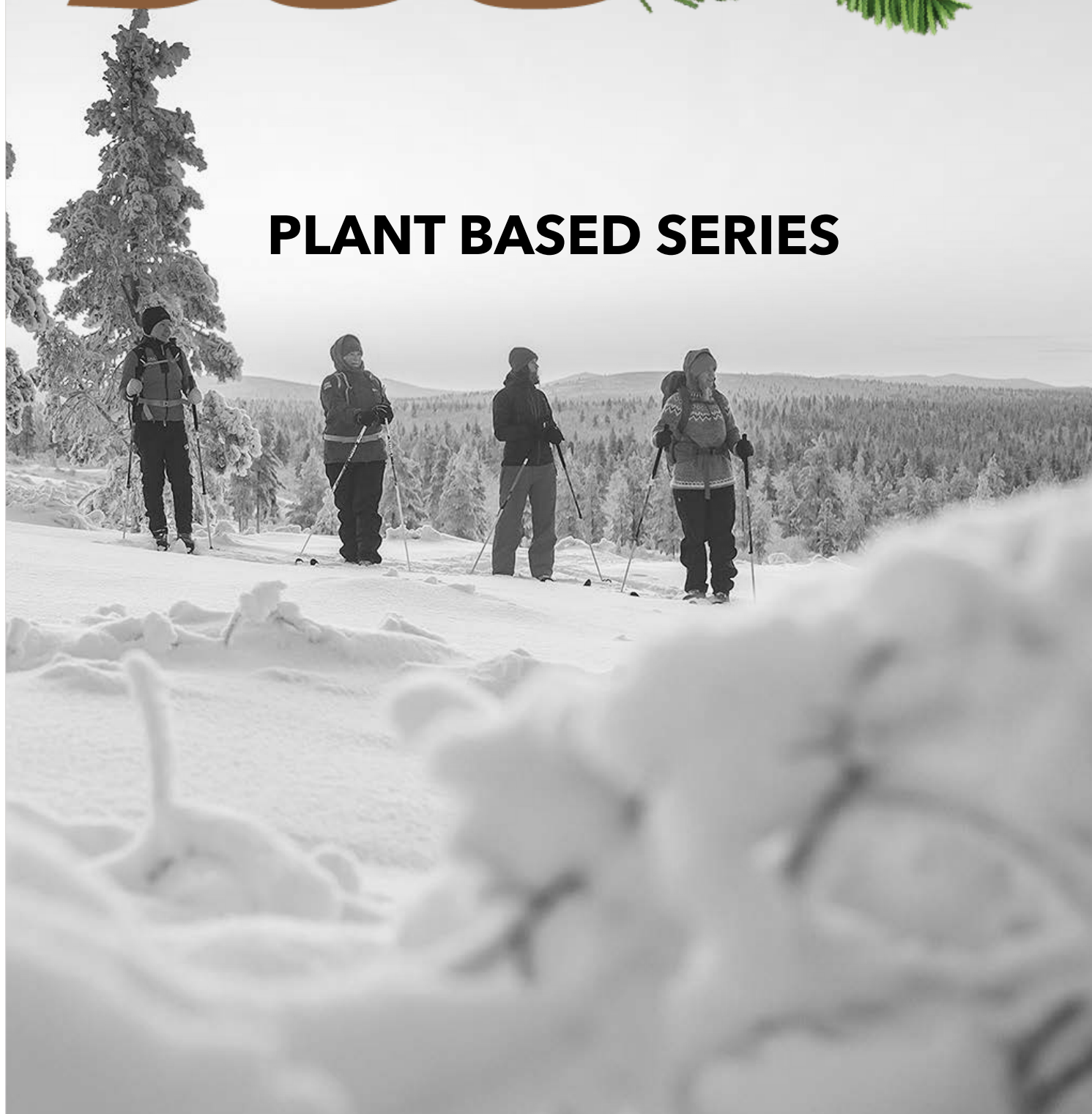
**360°**

# SKI WAX FROM NATURE

# 360°



## PLANT BASED SERIES





Ingredients to 360° liquid glide waxes are coming from vegetal resources and solvent used is bioethanol.

Sugarcane-based plastic is used in the bottles. Substituting petroleum-based components with nature-based alternatives greatly reduces the environmental footprint of our products, as these natural resources absorb CO2 as they grow.



## FOR XC AND ALPINE



52100-360C80  
**360° COLD**  
-2/-20°C | 28/-4°F



52100-360A80  
**360° ALL TEMP**



Ingredients to 360° glide waxes are coming from vegetal resources and solvent used is bioethanol.

Sugarcane-based plastic is used in the bottles. Substituting petroleum-based components with nature-based alternatives greatly reduces the environmental footprint of our products, as these natural resources absorb CO2 as they grow.



## FOR XC AND ALPINE



51100-360C60  
**360° COLD**  
-2/-20°C | 28/-4°F



51100-360A60  
**360° ALL TEMP**



Ingredients to 360° products are coming from vegetal resources and solvent used is bioethanol.

Sugarcane-based plastic is used in the bottles. Substituting petroleum-based components with nature-based alternatives greatly reduces the environmental footprint of our products, as these natural resources absorb CO2 as they grow.



## FOR XC AND ALPINE



52300-360BC80

**360° BASE CLEANER**

-2/-20°C | 28/-4°F



360SSC80

**360° SKIN SKI CARE**





53000-360BHHS  
**360° HORSEHAIR BRUSH SMALL**



**FOR XC AND  
ALPINE**



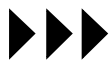
54100-360POS30  
**360° WOODEN SALES DISPLAY FOR 30  
BOTTLES**



53000-360PC10  
**360° NATURAL BASED FIBER POLISHING  
CLOTH 10 M**



52400-360KSS  
**360° LINEN BAG KIT: SKIN SKI**



# ***CARE***

## **MAINTENANCE SERIES**

### **FOR XC AND ALPINE**



Liquid care product, which has been developed especially for maintenance of the skin strip of the skin skis. The present composition does not comprise aliphatic and aromatic hydrocarbon solvents as their presence even in small amounts could lead to detachment of the skin strip from the base of the ski. Regular maintenance of the skin strips guarantees the performance and extends the lifetime of the skis. Patents have been granted for both Skin Cleaner (F1127921B) and Skin Care (F1128011B) products.



CARE  
FOR XC

341-SSCC80  
SKIN SKI CLEAN & CARE

341-SSCB80  
SKIN SKI CARE BLUE  
-2/-15°C | 28/5°F



341-SSCR80  
SKIN SKI CARE RED  
+7/-3°C | 45/27°F

341-QSC  
SKIN SKI CLEANER

341-QSC200  
SKIN SKI CLEANER 200ML





CARE CLEAN & GLIDE LIQUID GLIDE

Cleans effectively the glide zones from dirt and maintains base by creating a hard and dirt-resistant coating. Always start a new waxing by cleaning the ski base with CLEAN & GLIDE. It improves the performance of the glide waxes on top of it since ski waxes absorbs only to clean ski base.

**CARE**  
**FOR XC AND ALPINE**



930-CG200FF  
**CLEAN & GLIDE**  
200ML



930-CG200  
**CLEAN & GLIDE**  
**FLUORINATED** 200ML



930-CG500FF  
**CLEAN & GLIDE**  
500ML



930-CG500  
**CLEAN & GLIDE**  
**FLUORINATED** 500ML

CARE CROWN AND ZERO 80ml

Cleaning and maintenance agent for crown & zero skis.

**CARE**  
**FOR XC**



341-LCGCZ  
**CLEAN & GLIDE**



341-LAICZ  
**ANTI-ICE**  
+2/-5°C | 36/23 °F



341-LGGCZ  
**GRIP & GLIDE**  
-2/-20°C | 28/-4 °F



CARE GRIP REMOVER	Grip removers for removing the grip waxes from grip zones.	<b>CARE</b> <b>FOR XC</b>	
	930-GR200 <b>GRIP REMOVER</b> 200ml	930-GR500 <b>GRIP REMOVER</b> 500ml	930-GR1000 <b>GRIP REMOVER</b> 1000ml

CARE BASE CLEANER	Base cleaners for cleaning the ski base, sidewalls and top sheet of all skis and snowboards.	<b>CARE</b> <b>FOR XC AND ALPINE</b>	
	930-BC200 <b>BASE CLEANER</b> 200ml	930-BC500 <b>BASE CLEANER</b> 500ml	930-BC1000 <b>BASE CLEANER</b> 1000ml

GLIDE KIT

Glide kit contains products to clean, maintain and glide wax all kind of skis and snowboards.

**CARE**  
FOR XC AND  
ALPINE



32410-CGKIT  
GLIDE KIT

SKIN SKI ALL IN ONE KIT

Skin Ski All In One kit contains products to clean, maintain and glide wax skin skis.

**CARE**  
FOR XC



32410-CSSAIOKIT  
SKIN SKI ALL IN ONE KIT

SKIN CARE KIT

Skin Care kit contains products to clean and maintain skin stripe of skin skis.

**CARE**  
FOR XC



32410-CSCKIT  
SKIN CARE KIT

SKIN & GW GLIDE KIT

Skin & GW Glide kit contains products to clean and maintain skin stripe and glide wax the glide zone of skin skis.

**CARE**  
FOR XC



32410-CSGWGKIT  
SKIN & GW GLIDE KIT



SKIN & PURE GLIDE KIT

Skin & Pure Glide kit contains products to clean and maintain skin stripe and glide wax the glide zone of skin skis.

CARE  
FOR XC

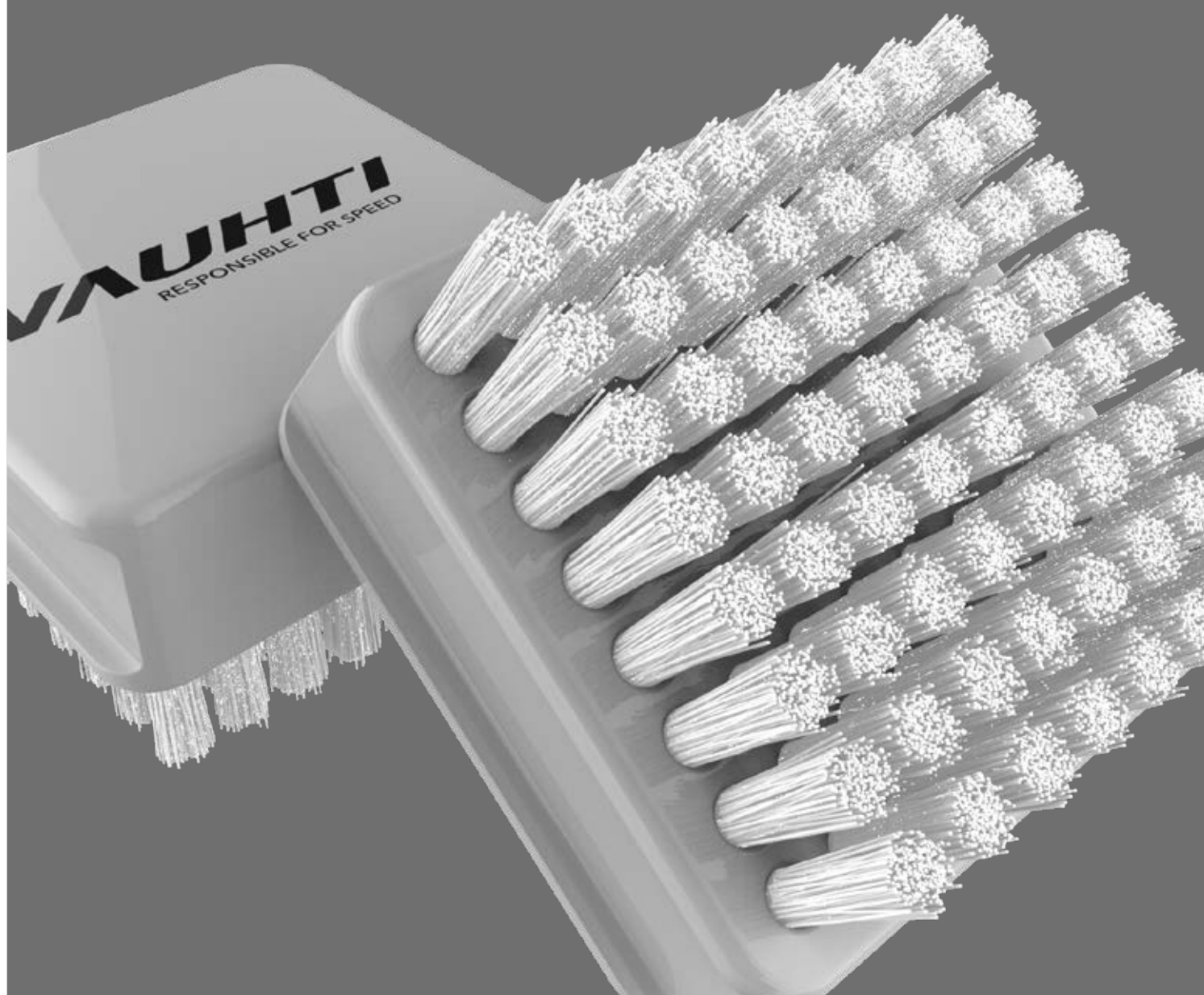


32410-CSPGKIT  
SKIN & PURE GLIDE KIT



# **TOOLS**

**TOOL SERIES  
FOR XC AND ALPINE**



SCRAPER

TOOLS



100-630  
PLEXI SHARP (WAX SCRAPER SHARPENER)

100-00870  
GROOVE SCRAPER



100-00810  
ACRYL SCRAPER  
3 MM

100-00820  
ACRYL SCRAPER  
5 MM

100-00830  
ACRYL DESIGNED  
5MM

100-00840  
SCRAPER  
SNOWBOARD

CORK

TOOLS



105-00910  
SYNTHETIC CORK



105-00911  
SYNTHETIC CORK WITH  
SANDPAPER



105-00912  
SYNTHETIC CORK WITH  
FELT



105-00920  
NATURAL CORK



105-00924  
SANDPAPER FOR  
SYNTHETIC CORK<sub>80(3PCS)</sub>



105-00921  
SANDPAPER FOR  
SYNTHETIC CORK<sub>100(3PCS)</sub>



105-00922  
SANDPAPER FOR  
SYNTHETIC CORK<sub>120(3PCS)</sub>



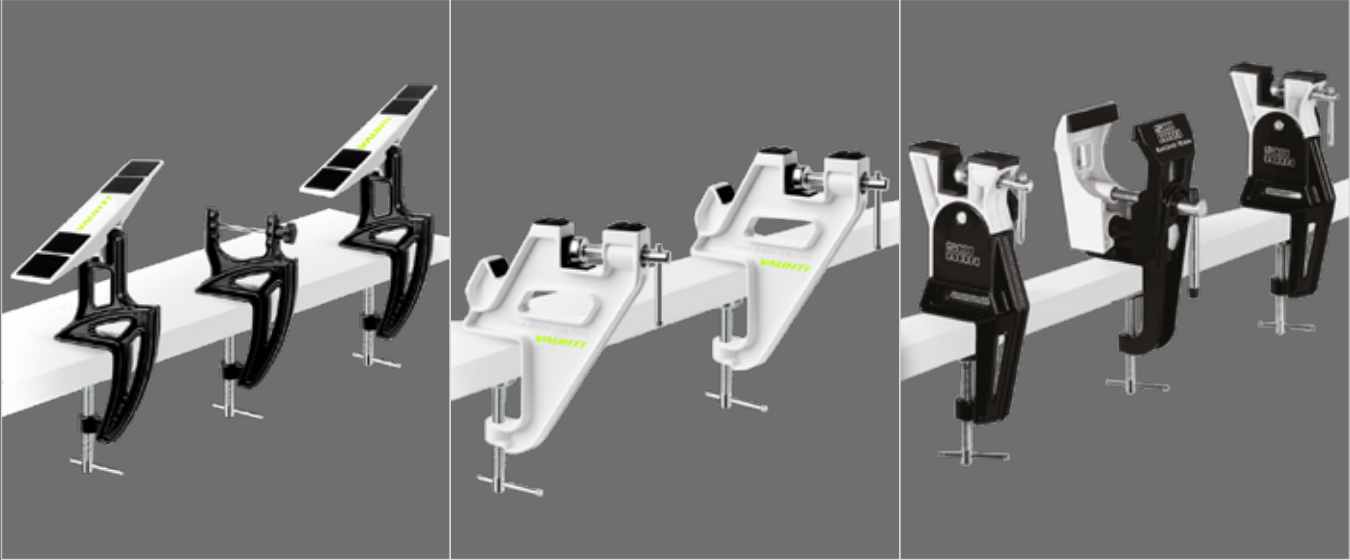
CLOTH   FIBER   TEFLON				TOOLS
				
	110-00950 FIBERTEX	110-00980 POLISHING CLOTH 10M	110-00960 POLISHING CLOTH 20M	110-00970 TEFLON CLOTH

WAX IRON				TOOLS
				
	119-V1400 WAX IRON ECONOMY 1000W	119-V1600 WAX IRON 3MM THICK & DIGITAL 1000W		

ROTO BRUSH | ROTO HANDLE

					TOOLS
					
115-01070	ROTO NYLON BRUSH	115-01071	ROTO NATURAL CORK	115-01072	ROTO POWDER BRUSH
					
115-01074	ROTO FLEECE	115-01073	ROTO HANDLE 100ML	115-01074	ROTO HANDLE COMBI 200ML

SKI VISE

		<i>TOOLS</i>
		
400-670 SKI VISE	2000-690 SKI VISE QUICK	2000-1070 SKI VISE RACE

NORDIC SHARP

	<i>TOOLS</i>
	
130-8001 NORDIC SHARP WITH W FINE ROLLER	



FILE GUIDE				TOOLS
				
	2000-3065 FILE GUIDE, ALUMINIUM 85°	2000-3064 FILE GUIDE, ALUMINIUM 86°	2000-3063 FILE GUIDE, ALUMINIUM 87°	2000-3062 FILE GUIDE, ALUMINIUM 88°

FILE CLAMP		TOOLS
		
	2000-3090 FILE CLAMP, PLASTIC	2000-3091 FILE CLAMP, RACE



SHARP

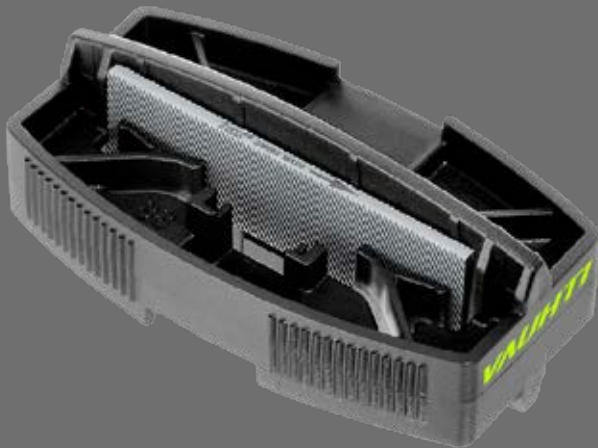
TOOLS



2000-3071  
ADJUSTABLE BASE SHARP



2000-4002  
EASY SHARP + TRIZACT



2000-5006  
RACING SHARP



2000-5002  
ERGO SHARP

SIDE WALL PLANNER

TOOLS



2000-3004  
SHARP SIDEWALL PLANER



2000-5005  
PRO SHARP SIDEWALL PLANER



2000-5120  
SPARE BLADE FOR PRO  
SHARP, STANDARD



2000-5125  
SPARE BLADE FOR PRO  
SHARP, 3MM RADIUS



2000-5130  
SPARE BLADE FOR PRO  
SHARP, ROUND

BRUSH

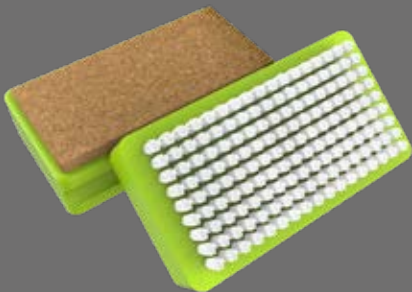
TOOLS



115-01010  
NYLON BRUSH SMALL



115-01020  
NYLON BRUSH LARGE



115-01015  
NYLON BRUSH WITH  
NATURAL CORK



115-01025  
NYLON FINISHING BRUSH



115-01035  
NYLON/BRASS COMBI  
BRUSH




BRUSH			TOOLS
	115-01040 POWDER BRUSH	115-01050 BRASS BRUSH	115-01060 STEEL BRUSH

ALPINE BRUSH			TOOLS
	2000-ABN ALPINE OVAL BRUSH, NYLON	2000-ABM ALPINE OVAL BRUSH, METAL	2000-ABHH ALPINE OVAL BRUSH, HORSE HAIR








ALPINE PRODUCT			TOOLS
			
	2000-FB910 FILE BRUSH	2000-RB RUBBER BANDS	2000-TPA TAPE

DIAMOND FILE					TOOLS
					
	2000-10100 DIAMOND FILE GRIT 100/extra coarse	2000-10200 DIAMOND FILE GRIT 200/coarse	2000-10400 DIAMOND FILE GRIT 400/medium	2000-10600 DIAMOND FILE GRIT 600/fine	2000-11000 DIAMOND FILE GRIT 1000/extra fine



PRO FILE			TOOLS	
				
2000-817813 PROFESSIONAL FILE,CHROME BASTARD 200mm cut 13		2000-817816 PROFESSIONAL FILE,CHROME 2ND CUT 200mm cut 16	2000-824620 PROFESSIONAL FILE,CHROME SMOOTH 200mm cut 20	

PRO RS FILE			TOOLS	
				
2000-87010010 PRO RS FILE, COARSE 100mm cut 10		2000-87010013 PRO RS FILE, MEDIUM 100mm cut 13	2000-87010016 PRO RS FILE, FINE 100mm cut 16	



CARVING FILE			<i>TOOLS</i>	
	2000-CF920 <b>CARVING FILE SPORT, 120MM</b> 120mm cut 13	2000-CF920 <b>COMBI FILE SPORT, 80MM</b> 120mm cut 13 & 5		

CARVING FILE			<i>TOOLS</i>
	2000-82512013 <b>CARVING FILE,CHROME BASTARD</b> 120mm cut 13	2000-82512016 <b>CARVING FILE,CHROME 2ND CUT</b> 120mm cut 16	2000-82512020 <b>CARVING FILE,CHROME SMOOTH</b> 120mm cut 20

TRAVEL BAG 65L

**TOOLS**



130-01530  
JYKKII TRAVEL BAG 65L

BACK BAG

**TOOLS**



130-01532  
KOIKAT BACKPACK



BACKBAG 15L

**TOOLS**



130-01528  
KALPPIA BACKPACK 15L

DRINKBELT

**TOOLS**



130-01526  
PUTELI DRINK BELT WITH BOTTLE

THERMO DRINKBELT

**TOOLS**



130-01524  
NÄKYSÄ THERMO DRINKBELT

SKI HARNESS

**TOOLS**



130-01536  
SKI HARNESS 2

CROSS COUNTRY SKI BAG

**TOOLS**



130-01538  
TAUHKA CROSS COUNTRY SKI BAG 3 PAIRS





SALES DISPLAY

TOOLS



SALES DISPLAY



SALES DISPLAY

*TOOLS*



SALES DISPLAY

SALES DISPLAY

Durable free standing metal display for 110 bottles, black.

**TOOLS**



400-1007B  
SALES DISPLAY FOR 110 BOTTLES, BLACK

SALES DISPLAY

Durable free standing metal display for 110 bottles, white.

*TOOLS*



400-1007W  
SALES DISPLAY FOR 110 BOTTLES, WHITE

SALES DISPLAY

Durable metal table display, black.

TOOLS



400-1006B  
SALES DISPLAY FOR 42 BOTTLES, BLACK

400-1017B  
SALES DISPLAY FOR 56 BOTTLES, BLACK



SALES DISPLAY

Durable metal table display, white.

TOOLS



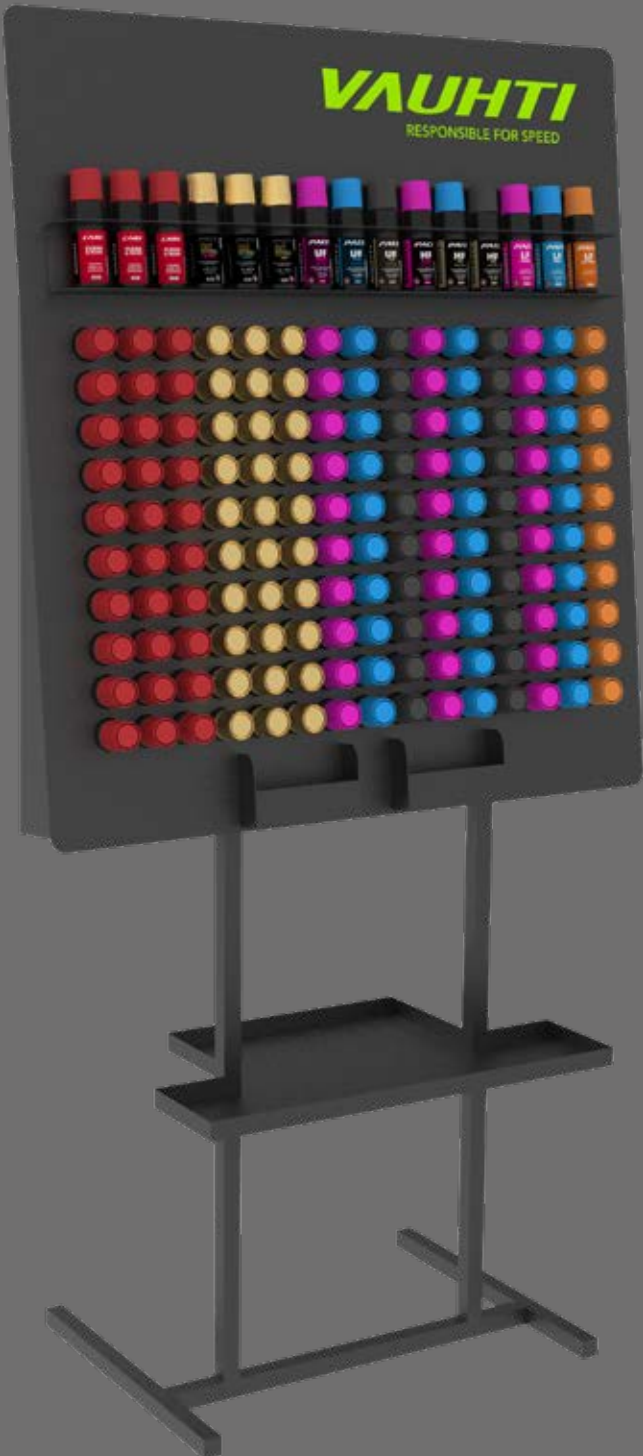
400-1006W  
SALES DISPLAY FOR 42 BOTTLES, WHITE

400-1017W  
SALES DISPLAY FOR 56 BOTTLES, WHITE

SALES DISPLAY

Durable free standing metal display for 165 bottles, black.

TOOLS

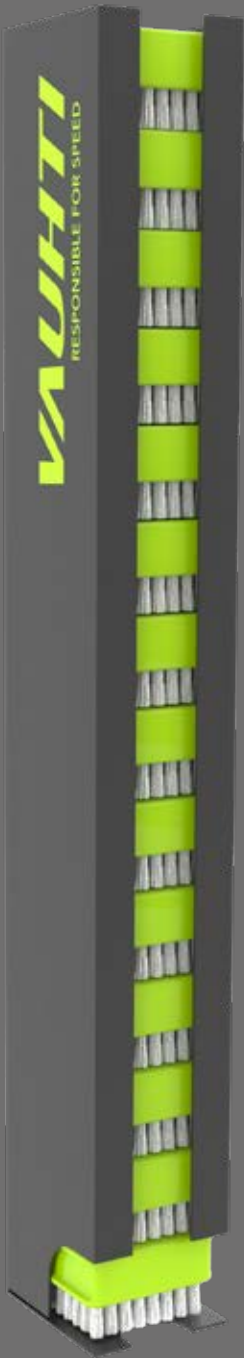


400-1018  
SALES DISPLAY FOR 165 BOTTLES, BLACK

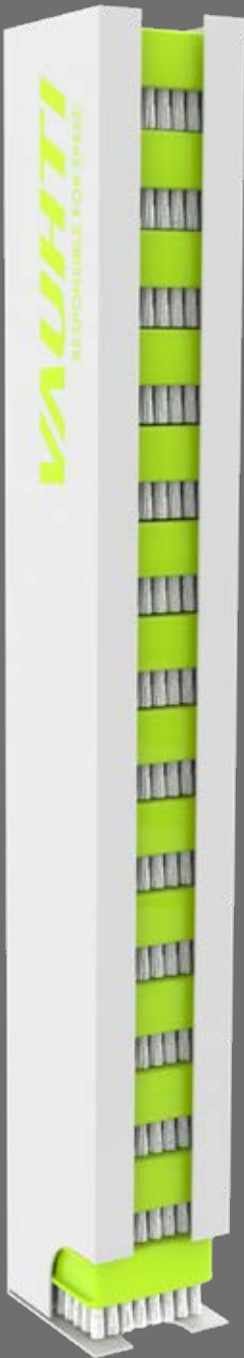
SALES DISPLAY

Durable metal display for brushes, black and white.  
Attachment to free standing metal displays.

TOOLS



400-1019B  
SALES DISPLAY FOR BRUSH, BLACK



400-1019W  
SALES DISPLAY FOR BRUSH, WHITE

***VUHTI***

Vauhti Speed Oy,  
82350 Tikkala  
Tohmajärvi,  
FINLAND

+358 (0)10 3465310  
vauhti@vauhti.fi



[www.vauhti.fi](http://www.vauhti.fi)